


Mouse Adiponectin Protein, His tag

Cat #:PRP1304

Size: 5µg/20µg/100µg/1mg

Product Information

	Product Name: Mouse Adiponectin Protein, His tag		
REF	Catalog Number: PRP1304	LOT	Lot Number: Refer to product label
	Purity: > 98 % as determined by SDS-PAGE		
	Storage: Store at -20°C		Preparation method: E. coli
	Shipping: The product is shipped at ambient temperature.		

Background: Adiponectin is a secreted protein. It is synthesized exclusively by adipocytes and secreted into plasma. Adiponectin is an important adipokine that is involved in the control of fat metabolism and insulin sensitivity, with direct anti-diabetic, anti-atherogenic and anti-inflammatory activities. Adiponectin Stimulates AMPK phosphorylation and activates in the liver and the skeletal muscle, enhancing glucose utilization and fatty-acid combustion. Adiponectin also antagonizes TNF-alpha by negatively regulating its expression in various tissues such as liver and macrophages, and also by counteracting its effects. It inhibits endothelial NF-kappa-B signaling through a cAMP-dependent pathway. Adiponectin may play a role in cell growth, angiogenesis and tissue remodeling by binding and sequestering various growth factors with distinct binding affinities, depending on the type of complex: LMW, MMW or HMW.

Sequence: Amino acid sequence derived from Mouse Adiponectin (Q60994) (Val21-Asn247) was expressed with 6×His tag.

Protein length: The recombinant Mouse Adiponectin consists of 227 amino acids and predicts a molecular mass of 24.6 kDa.

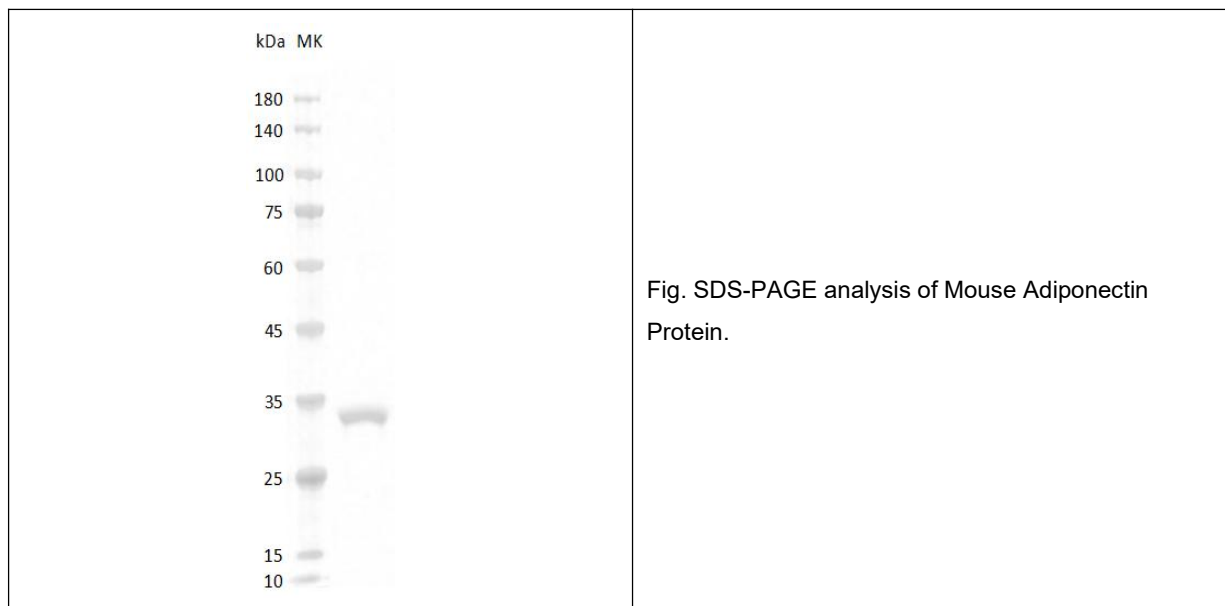
Biological Activity: Testing in progress.

Endotoxin: < 0.1 EU per µg of the protein as determined by the LAL method.

Formulation: Lyophilized from 20mM Tris, 150mM NaCl, pH 8.0.

Storage Instructions: Lyophilized protein product should be stored desiccated below -20°C. Upon reconstitution, the protein should be stored at 4°C between 2-7 days and for future use below -20°C. For long term storage it is recommended to add a carrier protein (0.1% HSA or BSA). Please prevent freeze-thaw cycles.

Usage notes: Always centrifuge tubes before opening. It is recommended to reconstitute the lyophilized protein using the buffer we provided not less than 100 µg/ml, which can then be further diluted to other aqueous solutions.



Note: The product listed herein is for research use only and is not intended for use in human or clinical diagnosis. Suggested applications of our products are not recommendations to use our products in violation of any patent or as a license. We cannot be responsible for patent infringements or other violations that may occur with the use of this product.